



# Vulcano



· Blue Vulcano



· Violet Vulcano



· Brown Vulcano



· Clear Vulcano

## Prescription eye protection

### Description and composition:

**Made of propionate: flame retardant material. Temples with a metal core: adjustable to all types of head.** Totally incorporated metallic hinges for greater strength. Upper protection.

**Stainless steel side grille protection for better ventilation.**

#### UV 400 protection

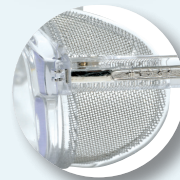
Available in: clear, brown, blue and violet.

**Sizes:** M: 52 x 19 mm/L: 54 x 20 mm

**Colour:** 

**Weight:** 30 g

**Base:** 5



Stainless steel mesh



Temples with a metal core



Incorporated metallic hinges

Colour	Size M	Size L	Product	MARKING	
				Lenses	Frame
Clear	907.073	907.074	Polycarbonate spectacles with anti-scratch treatment	M 1 F CE	M EN166 F CE
Clear	907.075	907.076	3 mm glass spectacles with safety glass treatment	M 1 S CE	
Brown	910.490	910.488	Polycarbonate spectacles with anti-scratch treatment	M 1 F CE	
Brown	910.491	910.489	3 mm glass spectacles with safety glass treatment	M 1 S CE	
Blue	910.528	910.529	Polycarbonate spectacles with anti-scratch treatment	M 1 F CE	
Blue	910.526	910.527	3 mm glass spectacles with safety glass treatment	M 1 S CE	
Violet	910.555	910.556	Polycarbonate spectacles with anti-scratch treatment	M 1 F CE	
Violet	910.557	910.558	3 mm glass spectacles with safety glass treatment	M 1 S CE	
			with anti-scratch organic prescription lenses with anti-scratch treatment	M 1 S CE	
			with anti-scratch polycarbonate prescription lenses with anti-scratch treatment	M 1 F CE	

# Prescription eye protection

<b>Standard and certification</b>	EN 166																																																																														
<b>Applications</b>	Impact protection. Sectors: construction, F&B, textile, paper and graphic arts, agricultural activities, forestry, automotive industry, plastic, construction, etc.																																																																														
<b>Conservation Storage - Expiry</b>	In order to maintain the spectacles in good condition, keep them in a clean, dry place in their appropriate case.																																																																														
<b>Directions Use</b>	Cleaning: use warm water and a neutral soap. Do not use abrasives or solvents. Rinse in water and dry with a soft cloth. Medop anti-fogging cleaning spray is also recommended. We advise regular inspection of the protectors, and their replacement if they have deteriorated in any way. Please ensure that the risk present in the workplace corresponds with the field of use of these protectors.																																																																														
<b>Presentation</b>	NEUTRAL sale units: 10 units per box. 25 boxes per carton. (Prescription lens spectacles: no minimum units required)																																																																														
<b>Bar code</b>	<table border="1"> <thead> <tr> <th></th> <th>GIN-13</th> <th>GIN-14</th> <th></th> <th>GIN-13</th> <th>GIN-14</th> </tr> </thead> <tbody> <tr><td>907.071</td><td>8423173135393</td><td>58423173135398</td><td>910.524</td><td>8423173855451</td><td>58423173855456</td></tr> <tr><td>907.072</td><td>8423173135409</td><td>58423173135404</td><td>910.525</td><td>8423173855468</td><td>58423173855463</td></tr> <tr><td>907.073</td><td>8423173135416</td><td>58423173135411</td><td>910.528</td><td>8423173855499</td><td>58423173855494</td></tr> <tr><td>907.074</td><td>8423173135423</td><td>58423173135428</td><td>910.529</td><td>8423173855505</td><td>58423173855500</td></tr> <tr><td>907.075</td><td>8423173135430</td><td>58423173135435</td><td>910.526</td><td>8423173855475</td><td>58423173855470</td></tr> <tr><td>907.076</td><td>8423173135447</td><td>58423173135442</td><td>910.527</td><td>8423173855482</td><td>58423173855487</td></tr> <tr><td>910.432</td><td>8423173841690</td><td>58423173841695</td><td>910.559</td><td>8423173855802</td><td>58423173855807</td></tr> <tr><td>910.435</td><td>8423173841744</td><td>58423173841749</td><td>910.560</td><td>8423173855819</td><td>58423173855814</td></tr> <tr><td>910.490</td><td>8423173851491</td><td>58423173851496</td><td>910.555</td><td>8423173855765</td><td>58423173855760</td></tr> <tr><td>910.488</td><td>8423173851415</td><td>58423173851410</td><td>910.556</td><td>8423173878313</td><td>58423173878318</td></tr> <tr><td>910.491</td><td>8423173851514</td><td>58423173851519</td><td>910.557</td><td>8423173855789</td><td>58423173855784</td></tr> <tr><td>910.489</td><td>8423173851453</td><td>58423173851458</td><td>910.558</td><td>8423173855796</td><td>58423173855791</td></tr> </tbody> </table>		GIN-13	GIN-14		GIN-13	GIN-14	907.071	8423173135393	58423173135398	910.524	8423173855451	58423173855456	907.072	8423173135409	58423173135404	910.525	8423173855468	58423173855463	907.073	8423173135416	58423173135411	910.528	8423173855499	58423173855494	907.074	8423173135423	58423173135428	910.529	8423173855505	58423173855500	907.075	8423173135430	58423173135435	910.526	8423173855475	58423173855470	907.076	8423173135447	58423173135442	910.527	8423173855482	58423173855487	910.432	8423173841690	58423173841695	910.559	8423173855802	58423173855807	910.435	8423173841744	58423173841749	910.560	8423173855819	58423173855814	910.490	8423173851491	58423173851496	910.555	8423173855765	58423173855760	910.488	8423173851415	58423173851410	910.556	8423173878313	58423173878318	910.491	8423173851514	58423173851519	910.557	8423173855789	58423173855784	910.489	8423173851453	58423173851458	910.558	8423173855796	58423173855791
	GIN-13	GIN-14		GIN-13	GIN-14																																																																										
907.071	8423173135393	58423173135398	910.524	8423173855451	58423173855456																																																																										
907.072	8423173135409	58423173135404	910.525	8423173855468	58423173855463																																																																										
907.073	8423173135416	58423173135411	910.528	8423173855499	58423173855494																																																																										
907.074	8423173135423	58423173135428	910.529	8423173855505	58423173855500																																																																										
907.075	8423173135430	58423173135435	910.526	8423173855475	58423173855470																																																																										
907.076	8423173135447	58423173135442	910.527	8423173855482	58423173855487																																																																										
910.432	8423173841690	58423173841695	910.559	8423173855802	58423173855807																																																																										
910.435	8423173841744	58423173841749	910.560	8423173855819	58423173855814																																																																										
910.490	8423173851491	58423173851496	910.555	8423173855765	58423173855760																																																																										
910.488	8423173851415	58423173851410	910.556	8423173878313	58423173878318																																																																										
910.491	8423173851514	58423173851519	910.557	8423173855789	58423173855784																																																																										
910.489	8423173851453	58423173851458	910.558	8423173855796	58423173855791																																																																										

## Optional treatments



endurance

Lenses 3 times more resistant to abrasion

NO<sub>2</sub>

Anti - reflective technology

UltraClean

Repels water and dust



endurance

Lenses 3 times more resistant to abrasion

NO<sub>2</sub>

Anti - reflective technology

UltraClean

Repels water and dust

blue PROTECT

Repels water and dust



endurance

Lenses 3 times more resistant to abrasion

NO<sub>2</sub>

Anti - reflective technology

Antifog

Avoids lens fogging

Recommended for:

- >Surface dirt.
- >Suspended dust.
- >Presence of grease.
- >Small splash of water

Recommended for:

- >Everyone that works using blue light.
- >Office workers
- >Workers under strip lighting or spotlights.
- >Workers using displays continually

Recommended for:

- >Temperature changes
- >Steam emissions
- >Use of respiratory protection
- >Physical labour

