



Stilus



Prescription eye protection

Description and composition:

Black frames made of cellulose acetate (front) with stainless steel temples.

Polycarbonate side protection: high resistance.

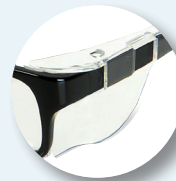
Prescription versions (PC and CR93) allow lenses with +6 through -6 dioptres.

All polycarbonate lenses have an anti-scratch treatment and glass lenses are made of safety glass.

Sizes: S: 52 x 16 mm/M: 54 x 16 mm

Colour: ●

Weight: 37 g



Side protection



Stainless steel temples



Recommended for office work

Ref.	Product	Size	MARKING	
			Frame	Lenses
912638	Organic spectacles + Blue Protect	M	MEDOP EN 166 F CE	2C-1,2 MEDOP 1 F CE
911569	Polycarbonate spectacles	S	MEDOP EN 166F CE	2C-1.2 MEDOP 1 F CE
911568	Polycarbonate spectacles	M	MEDOP EN 166F CE	2C-1.2 MEDOP 1 F CE
	with anti-scratch organic prescription lenses		MEDOP EN 166F CE	MEDOP 1 S K CE
	with anti-scratch polycarbonate prescription lenses		MEDOP EN 166F CE	2C-1,2 MEDOP 1 F CE

Prescription eye protection

Standard and certification	EN 166												
Applications	<p>Protects against impacts and blue-violet spectrum light waves, which are harmful to the eye, while allowing essential light through. This spectrum of light is emitted by a broad range of electronic devices: Data display screens, mobile phones, i-Pads, tablets, etc... A high degree of exposure to this type of harmful light affects the quality of sleep and eye health (photo toxic injury) causing eyes to become red and irritated, dry eyes, blurred vision, fatigue and headaches.</p> <p>Sectors: industry in general but especially recommended for parts inspectors and office or workshop personnel that, due to the characteristics of the job, need spectacles for presbyopia and are at risk from impacts, and in general for any job that involves the use of devices that emit an excess of blue-violet spectrum waves (see previous paragraph).</p>												
Conservation Storage - Expiry	In order to maintain the spectacles in good condition, keep them in a clean, dry place in their appropriate case.												
Directions Use	<p>The Blue Protect treatment protects the eyes from ocular pathologies, in addition to providing maximum protection for the lenses against reflections, scratches, water and dirt.</p> <p>Cleaning: use warm water and a neutral soap. Do not use abrasives or solvents. Rinse in water and dry with a soft cloth. Medop anti-fogging cleaning spray is also recommended.</p> <p>We advise regular inspection of the protectors, and their replacement if they have deteriorated in any way. Please ensure that the risk present in the workplace corresponds with the field of use of these protectors.</p>												
Presentation	<p>NEUTRAL sale units: 12 units per box. 300 units per carton. (Prescription lens spectacles: no minimum units required)</p>												
Bar code	<table border="1"> <tr> <td>911.817</td> <td>GIN-13: 8423173874834</td> <td>GIN-14: 68423173874836</td> </tr> <tr> <td>911.816</td> <td>GIN-13: 8423173874827</td> <td>GIN-14: 68423173874829</td> </tr> <tr> <td>911.569</td> <td>GIN-13: 8423173874858</td> <td>GIN-14: 68423173874850</td> </tr> <tr> <td>911.568</td> <td>GIN-13: 8423173874841</td> <td>GIN-14: 68423173874843</td> </tr> </table>	911.817	GIN-13: 8423173874834	GIN-14: 68423173874836	911.816	GIN-13: 8423173874827	GIN-14: 68423173874829	911.569	GIN-13: 8423173874858	GIN-14: 68423173874850	911.568	GIN-13: 8423173874841	GIN-14: 68423173874843
911.817	GIN-13: 8423173874834	GIN-14: 68423173874836											
911.816	GIN-13: 8423173874827	GIN-14: 68423173874829											
911.569	GIN-13: 8423173874858	GIN-14: 68423173874850											
911.568	GIN-13: 8423173874841	GIN-14: 68423173874843											

