



Trousers



Body protection: aluminised clothing

Description and composition:

Made in 100% para-aramid Aratex (450 g/m²). Fabric especially designed to protect from convective heat, radiating heat and metal splashes. "Double mirror" system: double aluminised layer + basic material, meaning maximum protection.

With suspenders for better fit.

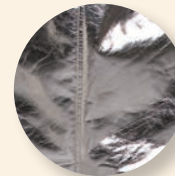
This PPE is recommended for industrial activities where the user has:

- Brief contact with a small flame (A1)
- Convective heat sources up to 80 Kw/m² (B1)
- Radiating heat sources up to 20 Kw/m² (C4)
- Molten aluminium and iron splashes (D3)
- Small splashes of molten metal (E3)
- Contact heat (up to 250 °C) (F2)

Size: S, M, L, XL and XXL **EN 340/EN ISO 11612** **Category III PPE**



Suspenders incorporated



100% para-aramid (450 g/m²) Aratex fabric



Wide range of sizes: S, M, L, XL and XXL

MARKING

Ref.	Product
911.540	TROUSERS Size S Width: 54 cm / Length: 94 cm
908.299	TROUSERS Size M Width: 62cm / Length: 110 cm
908.300	TROUSERS Size L Width: 70cm / Length: 120 cm
910.580	TROUSERS Size XL Width: 76cm / Length: 120 cm
911.566	TROUSERS Size XXL Width: 84 cm / Length: 120 cm

	Limited flame propagation	A1	A2
	Convective heat	B1	B2 B3
	Radiant heat	C1	C2 C3 C4
	Molten iron splashes	D1	D2 D3
	Molten aluminium splashes	E1	E2 E3
	Contact heat	F1	F2 F3

Body protection: aluminised clothing

Standard and certification	EN 340 / EN ISO 11612 Category III PPE
Applications	PPE for industrial use in the following sectors: foundries, metal industry, pyrotechnics, furnace repair, cement works, steelworks, etc.
Conservation Storage - Expiry	Protect from light and dust. Not washable. Clean with a damp sponge. Do not dry clean.
Directions Use	Wear aluminised trousers over user's trousers. Adjust suspenders. Must protect the lower part of the leg, ankle and the upper portion of footwear against small splashes of molten metal.
Presentation	Individually packed: 1 unit.
Bar code	Trousers, size S GTIN-13: 8423173874636 GTIN-14: 18423173874633 Trousers, size M GTIN-13: 8423173140427 GTIN-14: 18423173140424 Trousers, size L GTIN-13: 8423173140434 GTIN-14: 18423173140431 Trousers, size XL GTIN-13: 8423173856021 GTIN-14: 18423173856028 Trousers, size XXL GTIN-13: 8423173874810 GTIN-14: 18423173874817

