



PRESCRIPTION COATINGS





WHY COATINGS MATTER

New technological advances mean lens quality can be dramatically improved and customised to suit each individual job. For this reason, various coatings can be applied to lenses to improve vision quality and add extra features.

UNIQUELY DESIGNED FRAMES

ADAPTED TO ALL
INDUSTRIAL HAZARDS.
THE BEST SOLUTION WITH
THE MOST ADVANCED
TECHNOLOGY FRAMES.

DIGITAL ORDER MANAGEMENT TOOL

CUSTOMERS CAN
MONITOR THE ENTIRE
PROCESS.
REAL-TIME ORDER
TRACKING.

EXPRESS SERVICE

PERSONALISED ADVICE.
7-DAY MANUFACTURING
LEAD TIME.
AFTER-SALES SERVICE.

100% SUITED TO
ALL
JOBS

Since a specific filter is used for a certain air contaminant, **why not choose a coating that best suits the risk in each environment?**

EXPERTS IN **WORKPLACE EYE HEALTH**

OUR COATINGS



REPELS WATER DROPS, DUST,
GREASE AND DIRT



PREVENTS LENS **FOGGING**



REDUCES HARMFUL LIGHT IN ADDITION
TO REPELLING DIRT AND GREASE



ALL NEW COATINGS
INCLUDE **ENDURANCE**:

X3 times more wear
resistant.

Built-in anti-glare

PREVENTS LENS FOGGING

This coating when applied to lenses allows **clear and condensation-free vision**. Not only does it stop lenses from fogging, but it eliminates fog two times faster than an uncoated lens.



To achieve the **anti-fogging effect**, the activator spray needs to be applied to both sides of the lens. The spray must be applied when the user notices that the anti-fogging effect has diminished.

Spray's estimated duration: 1 year

Benefits

- Allows safe use of the spectacles with respiratory protection.
- Prevents fogging in environments with changing temperatures.
- Less glare.
- Sharper vision.
- Anti-reflective.

Recommended for

- Temperature changes: ovens, cold-rooms, laundry rooms.
- Steam emissions: cleaning, food and beverage, chemical...
- Combined use of spectacles and half masks.
- Physical labour: logistics, maintenance, fork-lift operators...

A close-up photograph of a person's face wearing a grey respirator mask and clear safety glasses. The person is looking directly at the camera. The background is slightly blurred, showing some industrial or workshop environment. A purple banner with the Antifog logo is overlaid at the bottom left of the image.

Antifog®



REPELS WATER DROPS, DUST, GREASE AND DIRT

DOUBLE ANTI-SCRATCH COATING

Makes lenses 3 times more resistant to abrasion.

ANTI-REFLECTIVE

Increased visual comfort, greater durability and lens resistance.

HYDROPHOBIC

Repels drops of water, grease, dust and dirt.

Benefits

- Glare-free.
- Easy to clean.
- Repels dirt.
- High durability.
- Reduces reflections.
- Greater visual comfort.

Recommended for

- Surface dirt.
- Suspended dust.
- Presence of grease.
- Small splashes of water.



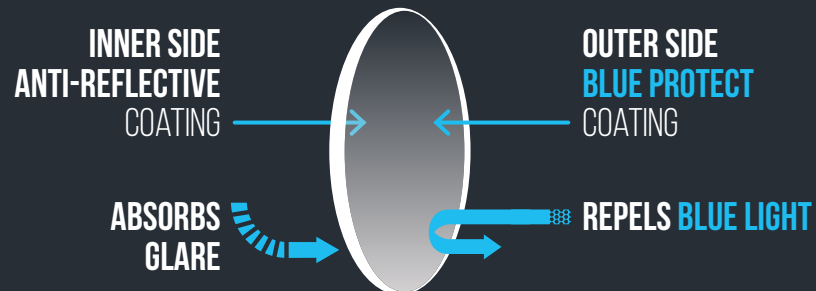
DOUBLE PROTECTION

PROTECTS FROM BLUE LIGHT PREVENTS GLARE

SI TO BLUE LIGHT PROTECTION
TO GLARE REMOVAL
TO EYE HEALTH

Benefits

- Protects the eyes **from the blue light emitted by screens and artificial lights.**
- Prevents **eye irritation and drying.**
- Prevents **blurred vision.**
- Prevents **visual fatigue.**
- Maintains **natural colours.**
- Repels **dirt and grease.**
- **Anti-reflective.**
- **Endurance:** lenses 3 times more resistant to abrasion.



Recommended for

- Office workers.
- Workers under strip-lighting or spotlights.
- Workers regularly using displays.
- Air traffic controllers, call centres, hospitals...

OTHER COATINGS

POLARISED LENSES



BLOCK ALL DAZZLING GLARE AND REFLECTIONS FROM THE GROUND OR FROM FLAT SURFACES.

PHOTOCHROMIC LENSES



IN CHANGING LIGHT CONDITIONS: **AUTOMATIC DARKENING**



SUN LIGHT
(OUTDOOR)



MEDIUM LIGHT



ARTIFICIAL LIGHT
(INDOOR)

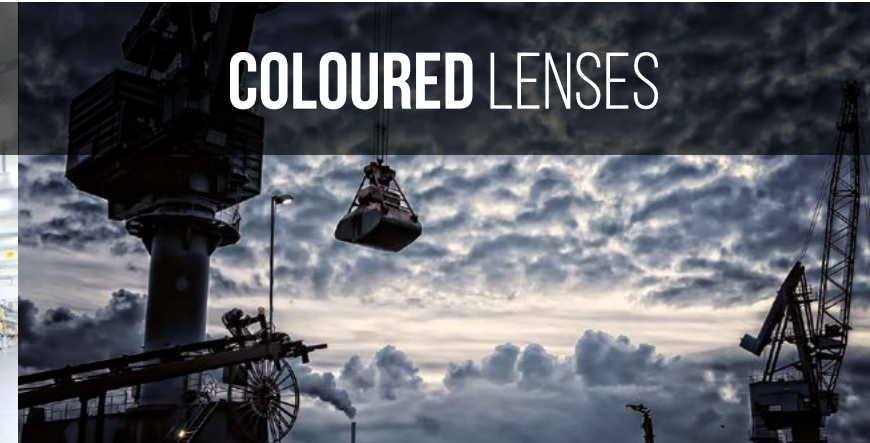
AVAILABLE COLOURS:



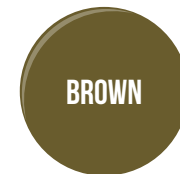
AVAILABLE COLOURS:



COLOURED LENSES



FOR SUNNY OUTDOOR
CONDITIONS



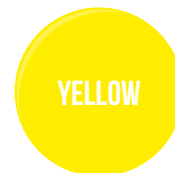
FOR CLOUDY OUTDOOR
CONDITIONS



FOR NAUTICAL
AND MOUNTAIN
ENVIRONMENTS



FOR WORK
ENVIRONMENTS
THAT ARE DARK OR
REQUIRE GREAT VISUAL
ACCURACY



FOR LOW LIGHT
ENVIRONMENTS OR FOR
NIGHT DRIVING



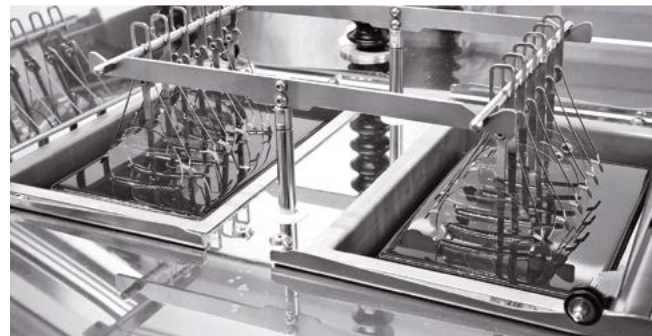
CUSTOMISED COATINGS

At the request of the client, custom coatings can be applied, depending on the needs of each industry.

We provide tailor-made solutions to meet sector-specific requirements, provide customised solutions for tenders...

Manufacture capacity of more than 1,000 lenses per day

All of this is thanks to our manufacturing experience of more than 50 years and our state-of-the-art, in-house laboratory.



COMPARISON OF COATINGS



Repels water and dust

Anti-glare technology

Double scratch resistant

Scratch resistant

For workspaces that have dirty surfaces and dust in the air



Prevents fogging

Anti-glare technology

Double scratch resistant

Scratch resistant

These spectacles are for jobs that undergo temperature changes and those where workers need to wear spectacles with breathing PPE



Blocks blue light

Repels water and dust

Anti-glare technology

Double scratch resistant

Scratch resistant

For office jobs or jobs with constant exposure to screens, spotlights or LED lights



**THANK
YOU**